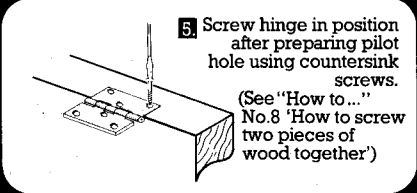
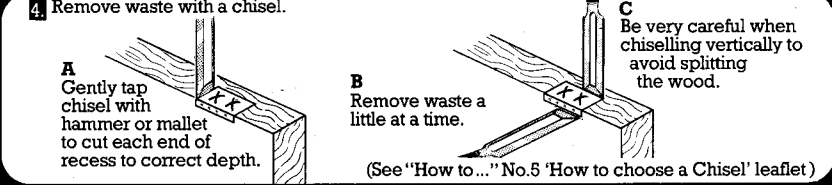
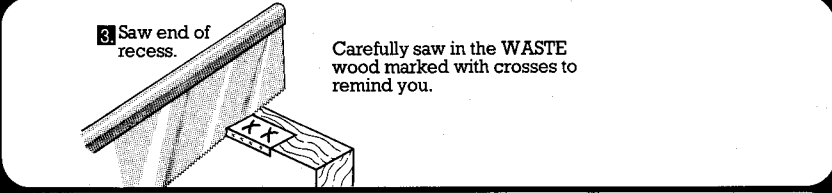
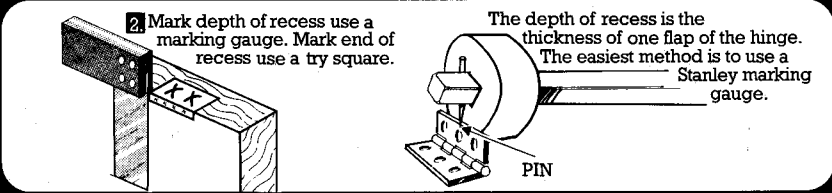
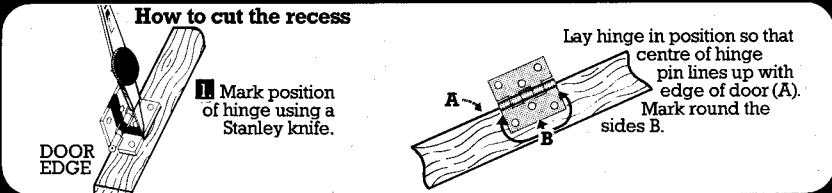
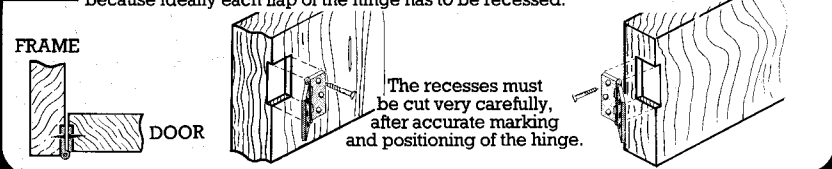


HINGES

34 How to fit Hinges

Fitting a butt hinge. This requires considerable skill and time to do it well, because ideally each flap of the hinge has to be recessed.



Fitting Concealed Recess & Pivot Hinges
Particular size drills are required for these depending on size of hinge.

Tools required to fit a butt hinge
Knife-5900 is ideal. Saw - Back Saw 15-312 or 15-322. Chisels - 5001 or 5002, various sizes to suit hinge size. Screwdriver - 5006 size to suit screws. Hammer - ST1½ or H201½. Marking gauge - 5061. Try Square 19/6".